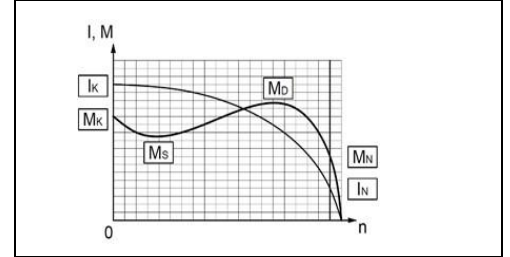




TECHNICAL SPECIFICATION SHEET

THREE PHASES SQUIRREL CAGE ASYNCHRONOUS MOTORS

Type	VEMS 112-4-413		
Protection Class	IP55		
Duty Type / Service Factor	S1	1.0	
Insulation Class	F		
Altitude / Ambient temperature	1000,0 m	40 C°	
Customer / Date / Order Number	-	10.07.2023	-



PERFORMANCE DATA (FULL LOAD)

Construction Type /Frame	Model	Max. %100 (kgf)	Current (A)	Rated Output (kW)	Static Moment(kg mm)	Bearing	Weight (kg)	Vibrating Force (Centrifugal Force) (kg)					
								Max. %100	2.Kad. %95	3.Kad. %85	4.Kad. %70	5.Kad. %50	Min. %30
112-4-413	3A	4133	4,5	2,4	1643,0	NJ 2311	122	4133,0	3992,0	3579,0	2923,0	2067,0	1070,0

CHARACTERISTIC DATA

Frame	Ductile Iron (GGG40)	Bearing	NJ 2311		
Terminal box	Ductile Iron(GGG40)	Special Equipment	<input type="checkbox"/> Heater	<input type="checkbox"/> Heat sensor	-
Cable Gland	Pg 13,5	Colour	RAL 6028 - Green		

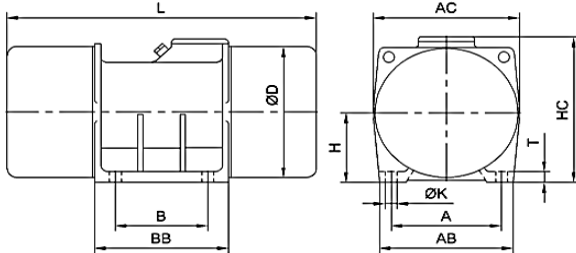
MODEL 1



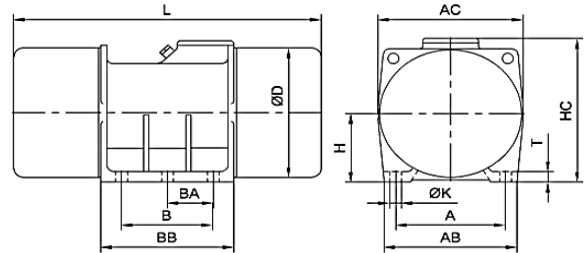
MODEL 2



MODEL 3A



MODEL 3B



DIMENSIONS (mm)

Construction Type / Frame	Model	Power (kW)	A	AB	AC	B	BB	BA	D	H	HC	K	T	L
112-4-413	3A	2,4	255,0	310,0	300,0	155,0	290,0	-	253,0	130,0	276,0	21,0	25,0	650,0

Important Note : Values provided in this datasheet represent the preliminary design values. Please keep in mind that these values might vary for the final product, due to technical requirements.