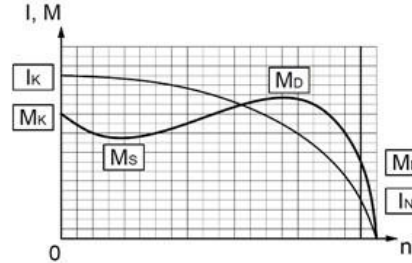




## TECHNICAL SPECIFICATION SHEET

### THREE PHASES SQUIRREL CAGE ASYNCHRONOUS MOTORS

Type	VHS - DKPM-S 110/2		
Protection Class	IP23		
Duty Type / Service Factor	VFD S1	1.0	
Insulation Class	F		
Construction Type /Frame	V1 / 280		
Altitude / Ambient temperature	1000 m	40 C°	
Customer / Date / Order Number	-	10.07.2023	-

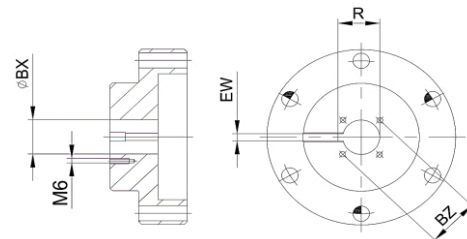


### PERFORMANCE DATA ( FULL LOAD )

Rated Output (kW)	Rated Speed (1/min)	Voltage (V)	Frequency (Hz)	Current (A)	Efficiency (%)	Power Factor (Cos φ)	Rated Torque MN (Nm)	Starting Current Ratio IK/IN	Starting Torque Ratio MK/MN	Breakdown Torque Ratio MD/MN	Permissible Axial Force (kN)
110	2965	380	50	201,4	92,20	0,90	354,3	7,00	2,10	2,90	2910,0

### CHARACTERISTIC DATA

Frame	Steel Plate	Bearings	Drive End Bearing	Non Drive End Bearing	
End Shield - DE and NDE	Cast Iron (GG20)		Standart	7322	6315
Foot	-				
Fan	Aluminium	Special Equipment	None		
Terminal box	Cast Iron (GG20)	Colour	RAL 2011 - Orange		
Cable Gland	PA6.6 - Pg36	Weight (kg)	760		



### DIMENSIONS (mm) (Frame and Coupling)

Frame											Coupling			
H	AK	AJ	BD	AA	CD	AG	AB	P	XG	BF	BX	EW	BZ	R
30,0	343,0	375,0	450,0	Pg36	1120,0	1240,0	440,0	560,0	45,0	17,5	42,9	9,5	63,5	47,2

Important Note : Values provided in this datasheet represent the preliminary design values. Please keep in mind that these values might vary for the final product, due to technical requirements.