



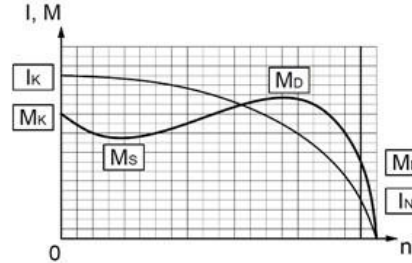
**ELSAN Elektrik San. ve Tic. A.Ş.**  
 Etiler Mah. 1458. Cad. No:40  
 06790 Etimesgut / Ankara / TÜRKİYE  
 T: +90 312 244 09 94 F: +90 312 243 14 38  
 M: info@emtas.com.tr W: www.emtas.com.tr



## TECHNICAL SPECIFICATION SHEET

### THREE PHASES SQUIRREL CAGE ASYNCHRONOUS MOTORS

|                                |                    |            |   |
|--------------------------------|--------------------|------------|---|
| Type                           | VHS - DKPM-S 315/4 |            |   |
| Protection Class               | IP23               |            |   |
| Duty Type / Service Factor     | VFD S1             | 1.0        |   |
| Insulation Class               | F                  |            |   |
| Construction Type /Frame       | V1 / 315           |            |   |
| Altitude / Ambient temperature | 1000 m             | 40 C°      |   |
| Customer / Date / Order Number | -                  | 10.07.2023 | - |

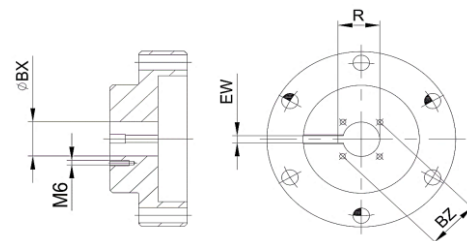


### PERFORMANCE DATA ( FULL LOAD )

| Rated Output (kW) | Rated Speed (1/min) | Voltage (V) | Frequency (Hz) | Current (A) | Efficiency (%) | Power Factor (Cos φ) | Rated Torque MN (Nm) | Starting Current Ratio IK/IN | Starting Torque Ratio MK/MN | Breakdown Torque Ratio MD/MN | Permissible Axial Force (kN) |
|-------------------|---------------------|-------------|----------------|-------------|----------------|----------------------|----------------------|------------------------------|-----------------------------|------------------------------|------------------------------|
| 315               | 1480                | 380         | 50             | 579,1       | 95,00          | 0,87                 | 2032,6               | 6,00                         | 1,80                        | 2,10                         | 19250,0                      |

### CHARACTERISTIC DATA

|                         |                  |                   |                   |                       |           |
|-------------------------|------------------|-------------------|-------------------|-----------------------|-----------|
| Frame                   | Steel Plate      | Bearings          | Drive End Bearing | Non Drive End Bearing |           |
| End Shield - DE and NDE | Cast Iron (GG20) |                   | Standart          | 29428                 | 7318+6318 |
| Foot                    | -                |                   |                   |                       |           |
| Fan                     | Aluminium        | Special Equipment | None              |                       |           |
| Terminal box            | Cast Iron (GG20) | Colour            | RAL 2011 - Orange |                       |           |
| Cable Gland             | Brass - M63      | Weight (kg)       | 1595              |                       |           |



### DIMENSIONS (mm) (Frame and Coupling)

| Frame |       |       |       |     |        |        |       |       |      |      | Coupling |      |      |      |
|-------|-------|-------|-------|-----|--------|--------|-------|-------|------|------|----------|------|------|------|
| H     | AK    | AJ    | BD    | AA  | CD     | AG     | AB    | P     | XG   | BF   | BX       | EW   | BZ   | R    |
| 35,0  | 343,0 | 375,0 | 508,0 | M63 | 1627,0 | 1745,0 | 425,0 | 580,0 | 58,0 | 17,5 | 55,6     | 12,7 | 82,6 | 61,3 |

Important Note : Values provided in this datasheet represent the preliminary design values. Please keep in mind that these values might vary for the final product, due to technical requirements.