



TECHNICAL SPECIFICATION SHEET

THREE PHASES SQUIRREL CAGE ASYNCHRONOUS MOTORS

Type	VEMS 132-2-530		
Protection Class	IP55		
Duty Type / Service Factor	S1	1.0	
Insulation Class	F		
Altitude / Ambient temperature	1000,0 m	40 C°	
Customer / Date / Order Number	-	10.07.2023	-



PERFORMANCE DATA (FULL LOAD)

Construction Type /Frame	Model	Max. %100 (kgf)	Current (A)	Rated Output (kW)	Static Moment(kg mm)	Bearing	Weight (kg)	Vibrating Force (Centrifugal Force) (kg)					
								Max. %100	2.Kad. %95	3.Kad. %85	4.Kad. %70	5.Kad. %50	Min. %30
132-2-530	3B	5306	6,7	4,0	527,0	NJ 2310	123	5306,0	5125,0	4595,0	3752,0	2653,0	1373,0

CHARACTERISTIC DATA

Frame	Ductile Iron (GGG40)	Bearing	NJ 2310		
Terminal box	Ductile Iron(GGG40)	Special Equipment	<input type="checkbox"/> Heater	<input type="checkbox"/> Heat sensor	-
Cable Gland	Pg 11 - Pg 13,5	Colour	RAL 6028 - Green		

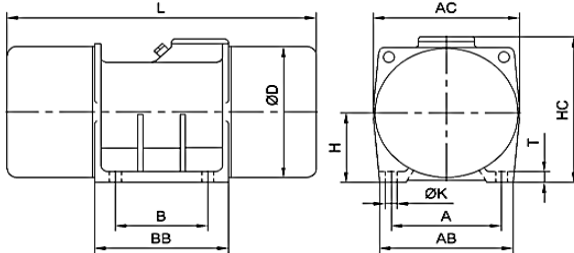
MODEL 1



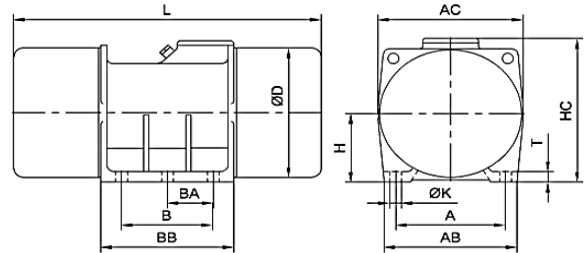
MODEL 2



MODEL 3A



MODEL 3B



DIMENSIONS (mm)

Construction Type / Frame	Model	Power (kW)	A	AB	AC	B	BB	BA	D	H	HC	K	T	L
132-2-530	3B	4,0	230,0	295,0	320,0	165,0	277,0	82,5	293,0	155,0	315,0	21,0	30,0	515,0

Important Note : Values provided in this datasheet represent the preliminary design values. Please keep in mind that these values might vary for the final product, due to technical requirements.