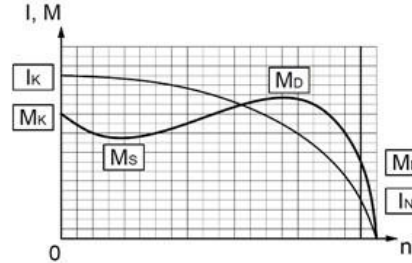




## TECHNICAL SPECIFICATION SHEET

### THREE PHASES SQUIRREL CAGE ASYNCHRONOUS MOTORS

Type	VHS - DKPM-G 11/2		
Protection Class	IP23		
Duty Type / Service Factor	VFD S1	1.0	
Insulation Class	F		
Construction Type /Frame	V1 / 160		
Altitude / Ambient temperature	1000 m	40 C°	
Customer / Date / Order Number	-	11.01.2024	-

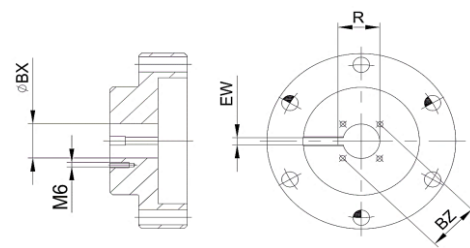
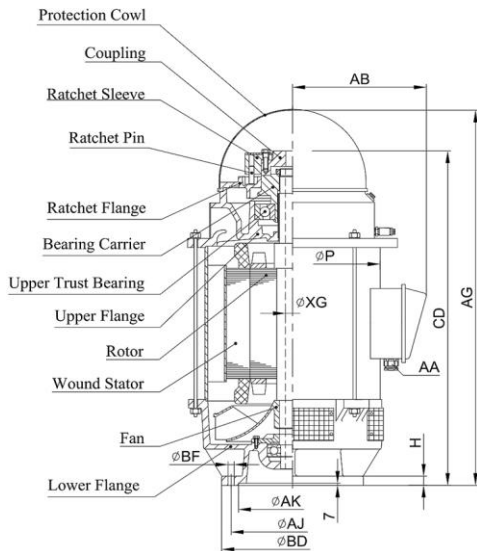


### PERFORMANCE DATA ( FULL LOAD )

Rated Output (kW)	Rated Speed (1/min)	Voltage (V)	Frequency (Hz)	Current (A)	Efficiency (%)	Power Factor (Cos φ)	Rated Torque MN (Nm)	Starting Current Ratio IK/IN	Starting Torque Ratio MK/MN	Breakdown Torque Ratio MD/MN	Permissible Axial Force (kN)
13,2	3498	460	60	23,2	84,00	0,85	36,0	6,50	2,40	2,50	1325,0

### CHARACTERISTIC DATA

Frame	Steel Plate	Bearings	Drive End Bearing	Non Drive End Bearing	
End Shield - DE and NDE	Cast Iron (GG20)		Standart	7312	6310
Foot	-				
Fan	Aluminium	Special Equipment	None		
Terminal box	Cast Iron (GG20)	Colour	RAL 2011 - Orange		
Cable Gland	PA6.6 - Pg29	Weight (kg)	160		



### DIMENSIONS (mm) (Frame and Coupling)

Frame											Coupling			
H	AK	AJ	BD	AA	CD	AG	AB	P	XG	BF	BX	EW	BZ	R
20,0	209,6	232,0	265,0	Pg29	653,0	740,0	270,0	360,0	33,5	11,0	25,4	6,4	35,0	28,3

Important Note : Values provided in this datasheet represent the preliminary design values. Please keep in mind that these values might vary for the final product, due to technical requirements.